



OWL WATERPROOFING

The Wise Choice

LAVA 20 System *Flat Roofs, New Builds, Balconies, Bathrooms*



Before



After



Before



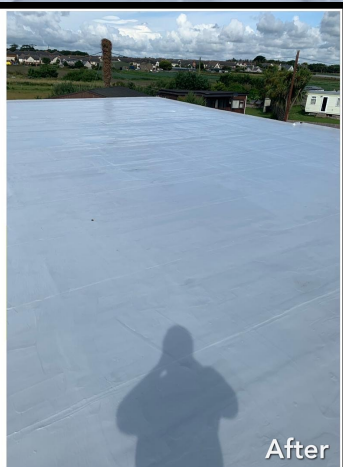
After

OWL Roof

Roof Reburbs only



Before



After



Before



After

Table of Content

Lava 20 System	2 - 3
Lava 20 Product Range	4 - 5
About Lava 20 & Specification	5 - 6
Lava 20 System Trim Guide	8
Lava 20 Detailing	9 - 11
Lava 20 Clear Top Coat	12
Lava 20 Dark Grey Top Coat	13
Lava 20 Application Guide	14
Lava 20 Anti Slip Projects	15
Owl Roof Silicone	16
Owl Flashing Grade the Pro Patch	17

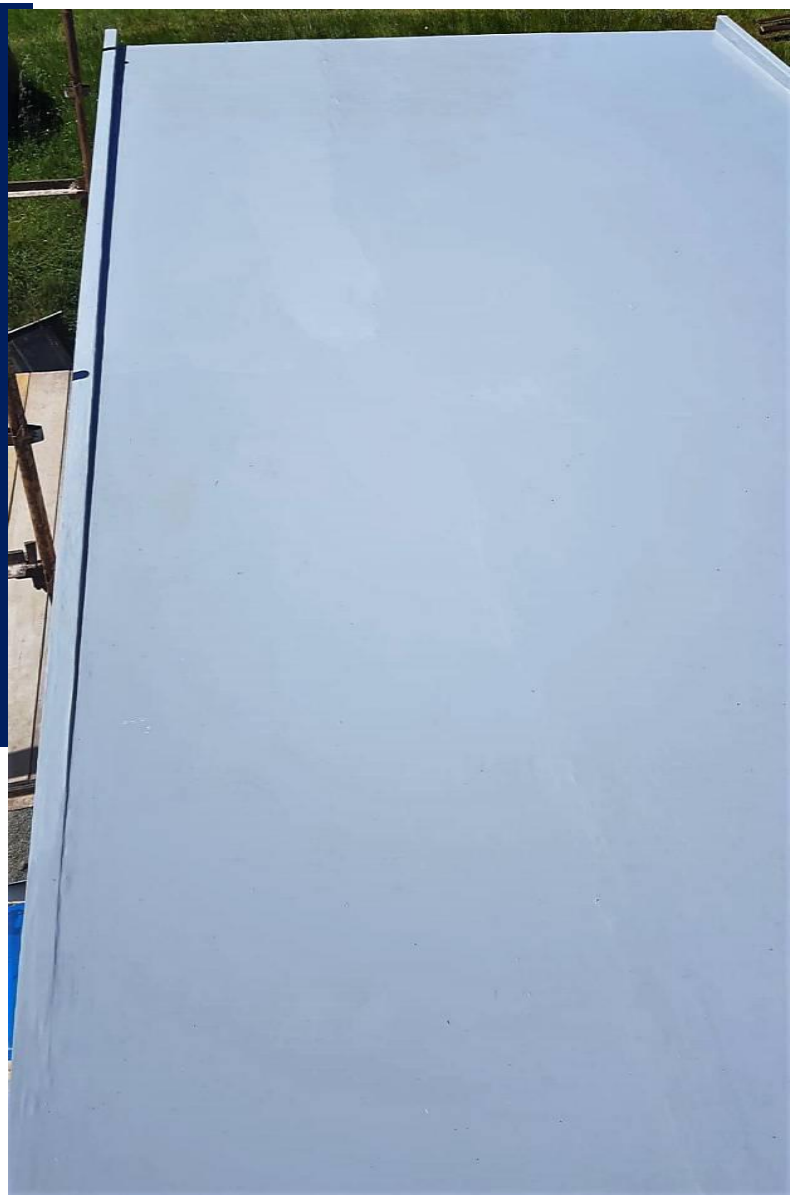




A flat roof is constantly exposed to humidity, ultraviolet degradation, weathering, acid rain attack, mechanical wear and ongoing movement stresses, due to temperature changes. As a result, most flat roofs are leaking and require renovation.

The professional, long lasting, waterproofing solution is the **LAVA 20 System**

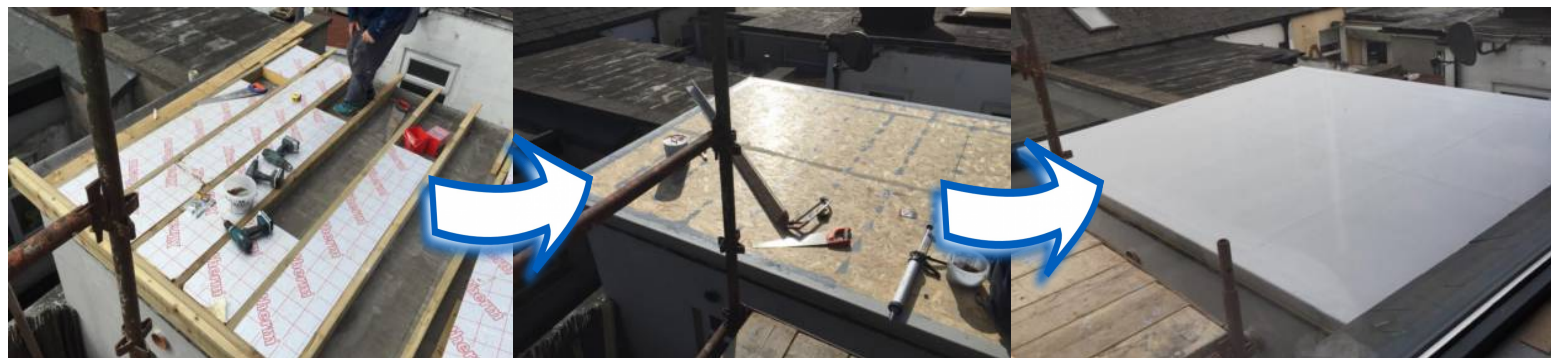
The **LAVA 20 System** is a group of coatings based on Polyurethane resins, which used in combination, creates a seamless membrane on the flat roof, that protects the building structure reliably and on a long term basis, even under the most difficult conditions.





Professional waterproofing applicators in over 45 countries, use the **LAVA 20 System** for demanding waterproofing. The reasons are:

- Simple application.
- When applied, forms a seamless membrane, without joints or leak possibilities.
- Resistance to water.
- Crack-bridging up to 2mm, even at -10°C.
- Maintenance of its mechanical properties, over a temperature span of -30°C to +90°C.
- Provides water vapor permeability.
- Provides full surface adhesion.
- Provides sun reflectivity, contributing to thermoinsulation.
- Provides anti-root properties.
- The waterproofed surface can be used for medium to heavy pedestrian traffic, depending on the **LAVA 20 TOP COAT**
- Resistant to detergents, oils and common chemicals.
- Easy local repair, if the membrane is mechanically damaged.
- Low cost.



uses

The **LAVA 20 System** can be used on:

- **Roofs, Balconies and Terraces**
- **Wet areas**
- **Water tanks**
- **Under / Over Tiles**
- **Public Walkways**
- **Foundations, etc.**



MORTAR



CONCRETE



BITUMENFELT



PVC AND EPDM MEMBRANE



METAL



WOOD

etc.

LAVA 20 System

The **LAVA 20 System** consists of

LAVA 20 Primers

LAVA 20 QUICK PRIME



LAVA 20 Quick Prime is a fast curing, one-component polyurethane primer, used to prepare absorbent surfaces like concrete, cement screed, mortar, wood etc.

LAVA PRIME 20



LAVA PRIME 20 is a two-component epoxy waterbased primer, used to prepare the majority of construction surfaces including absorbent and non-absorbent surfaces like bitumen-felts, ceramic tiles, moist concrete, etc.



LAVA 20 WATERPROOFING COATINGS

LAVA 20



The LAVA 20 is a premium, one-component, permanent elastic, liquid applied polyurethane coating, that cures to a seamless, highly elastic waterproofing membrane. Used on Roofs and Balconies etc.

LAVA 20 DETAIL



LAVA 20 DETAIL is a one-component, permanent elastic, liquid applied polyurethane coating, reinforced by fibers. It is used to waterproof details on the roof like exhaust pipes, light domes, etc.



LAVA 20 TOP COATS

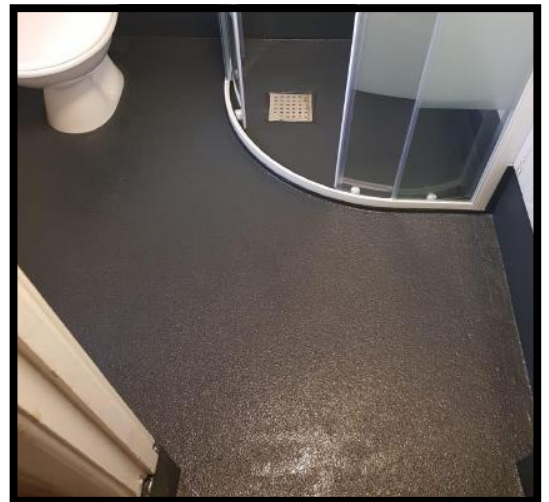
LAVA 20 CLEAR TOP COAT

LAVA 20 CLEAR TOP COAT is a transparent, UV-stable, permanent hard-elastic, one-component aliphatic polyurethane coating, used as a sealer over decorative polyurethane waterproofing coatings. Used on balconies and terraces where a medium pedestrian traffic is expected. LAVA 20 CLEAR TOP COAT can be also used as a transparent coating to waterproof ceramic tiles surfaces.



LAVA 20 GREY TOP COAT

LAVA 20 GREY TOP COAT is a pigmented, colourfast, UV-stable, permanent hard-elastic, one-component aliphatic polyurethane coating, used as a top-coat over exposed polyurethane waterproofing coatings. Used on public walkways and areas where a heavy pedestrian traffic is expected.



LAVA 20 AUXILIARY PRODUCTS

GEOTEXTILE

Polyester Mesh available in 1m x 100m roll or 10mm x 91m roll. Used for reinforcing roofing details or the entire area.

LAVA 20 CATALYST

Accelerator for use with LAVA 20. Mixing rate 750g Catalyst --- 25kg Lava 20 / 450g Catalyst --- 15kg Lava 20 / 180g Catalyst --- 6kg Lava 20

OWL PU MASTIC

OWL PU sealant used to seal joints and cracks.

BUTYL TAPE

Self Adhesive Butyl tape. Used for reinforcing roofing details etc.

application tools



Roller



Brush



Electric
paddle
drill



Sealant
application
gun

Waterproofing of Roofs, Balconies and Terraces

LAVA 20

LAVA 20 is the backbone of the OWL WATERPROOFING SYSTEM functioning as the main elastic and waterproofing membrane of the system.

LAVA 20 is a one-component, liquid-applied, cold applied and cold curing, polyurethane coating that cures to a seamless, highly permanent elastic waterproofing membrane.

LAVA 20 is used on most waterproofing applications as:

>ROOFS

>BALCONIES

>TERRACES

>WET AREAS

>PUBLIC WALKWAYS

>UNDER OR OVER TILES

>POLYURETHANE FOAM PROTECTION



LAVA 20 has been tested by the German State Testing Institute for Construction Materials MPA-Braunschweig, according the European Union Directive for liquid-applied roof waterproofing ETAG 005, and was found conforming.

LAVA 20 was tested by the French Testing Institute for Construction Materials BUREAU-VERITAS according the French Norms and was found conforming.

LAVA 20 was certified by the German State Institute for Construction Techniques DIBt-Berlin, with the European Technical Approval (ETA) and with the CE mark and certification.



LEVELS OF USE CATEGORIES ACCORDING ETAG 005:

Working Life:	W2	5' kVSe_ [mg_
Climate zone:	M and S	@adZ ~ EagfZ WgabW
Imposed loads:	PI to P3	Up to high pedestrian traffic
Roof	SI to S4	Roof slope from <5° to >30°
Lowest surface temperature:	TL3	-20° C
Highest surface temperature:	TH9	90° C
Reaction to fire:	Class E	EN 13501, DIN 4102-I und -7
Resistant to wind loads:	>50 kPa	Resistant to all wind loads



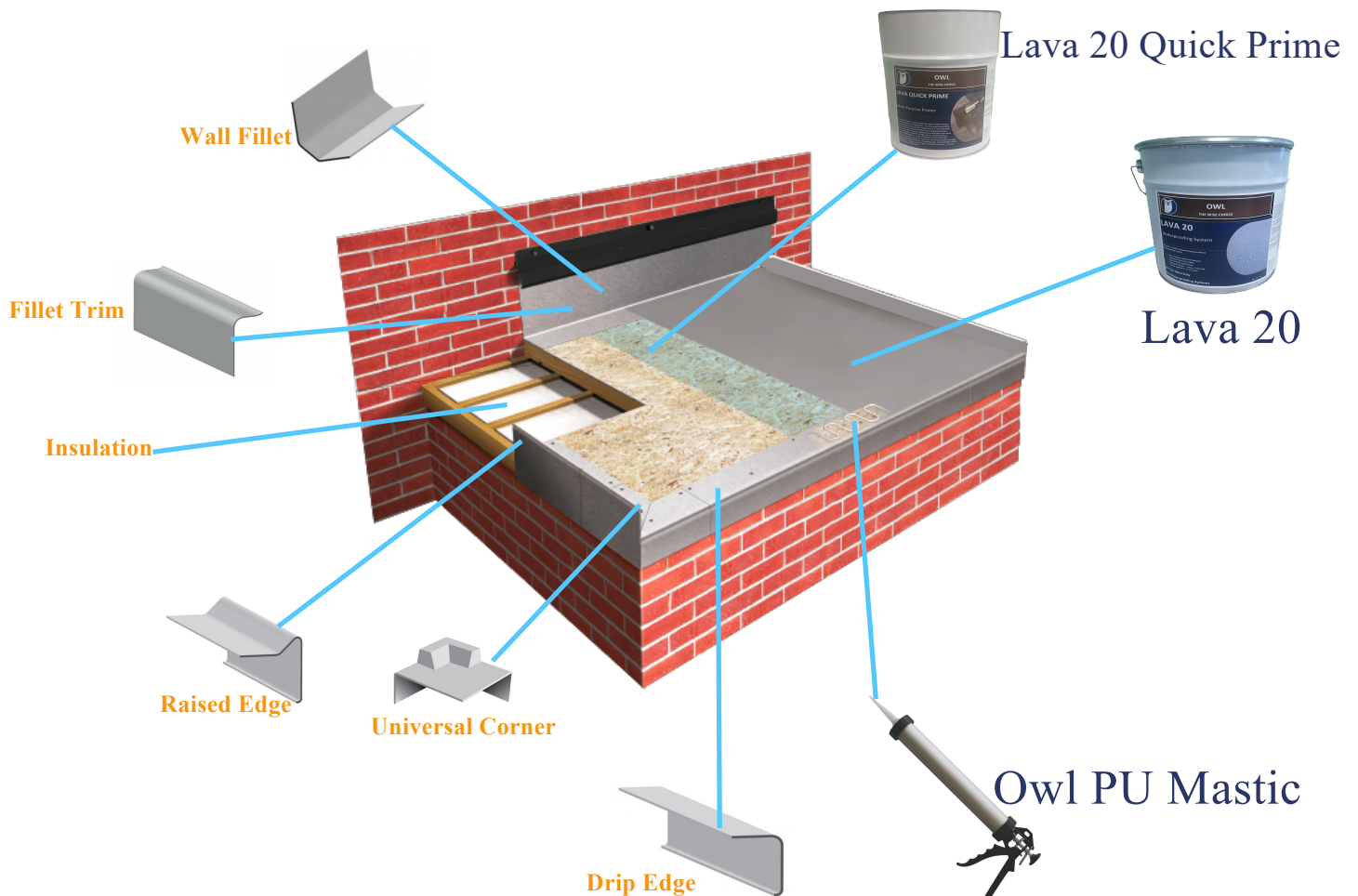
LAVA 20 was additionally tested and approved according:
 DIN 1928, which classifies it as a waterproofing coating.
 DIN 4102 part I, which classifies it as a B2 fire rating construction material.
 DIN 4102 part 7, which classifies it as a surface coating resistant to flying sparks and radiating heat.

LAVA 20 has also been tested and certified in many countries around the world according to local and national regulations and norms.

LAVA 20 System

LAVA 20

Below is a example of a quick and easy new build warm roof using LAVA 20 System



LAVA 20 DETAILING



LAVA 20 DETAIL is a liquid-applied, thixotropic, permanent elastic, fiber-reinforced, one component polyurethane coating used for long-lasting waterproofing of complex roofing details and connections.

LAVA 20 DETAIL is mainly used to waterproof details like:

>PIPES

>FLASHINGS AND 900 ANGLES

>LIGHTDOMES

>CHIMNEYS

>PHOTOVOLTAIC SYSTEMS

>WALL-FLOOR CONNECTIONS

>GUTTERS, etc.



By using the LAVA 20 DETAIL all complex roof details are quickly and securely waterproofed, with over 30 years combined experience in developing polyurethane systems, have formulated the to meet modern construction LAVA 20 DETAIL demands



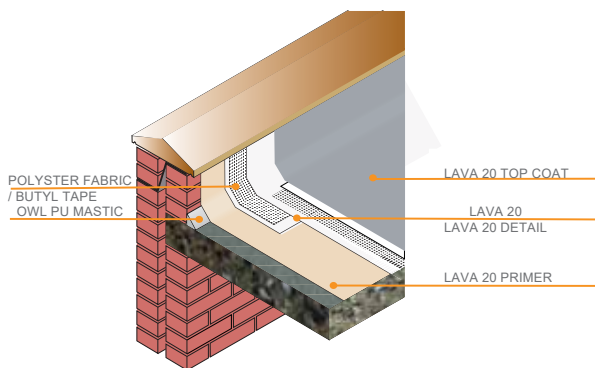
LAVA 20 DETAILING



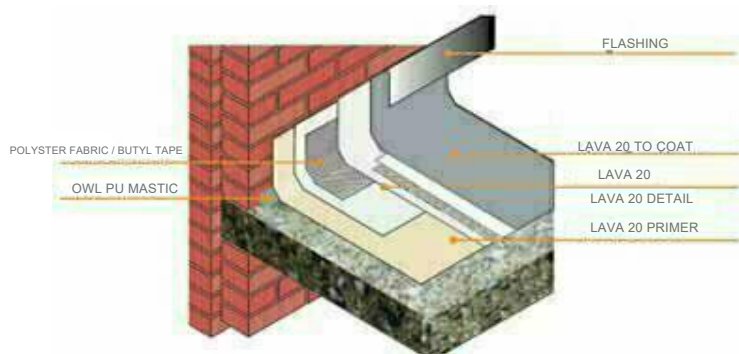
All the waterproofing coatings of the LAVA 20 DETAIL cure to form permanently elastic, seamless membranes providing waterproofing on a long-term basis, even to the most difficult and problematic details.

While other waterproofing membranes or systems fail at these difficult detail areas, the LAVA 20 DETAIL has proven itself to perform, even in the most extreme climatic zones on the planet.

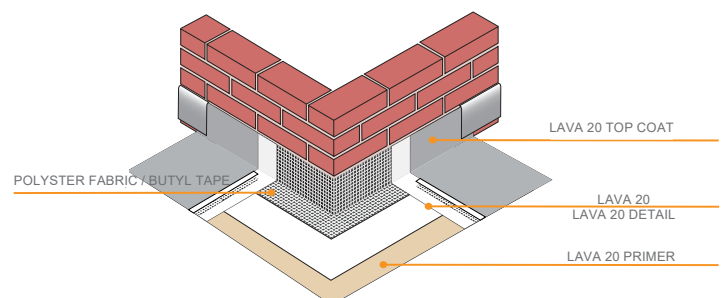
LAVA 20 DETAIL creates a seamless membrane with full surface adhesion to the surface, so no additional mechanical fixings or additional flashings are required.



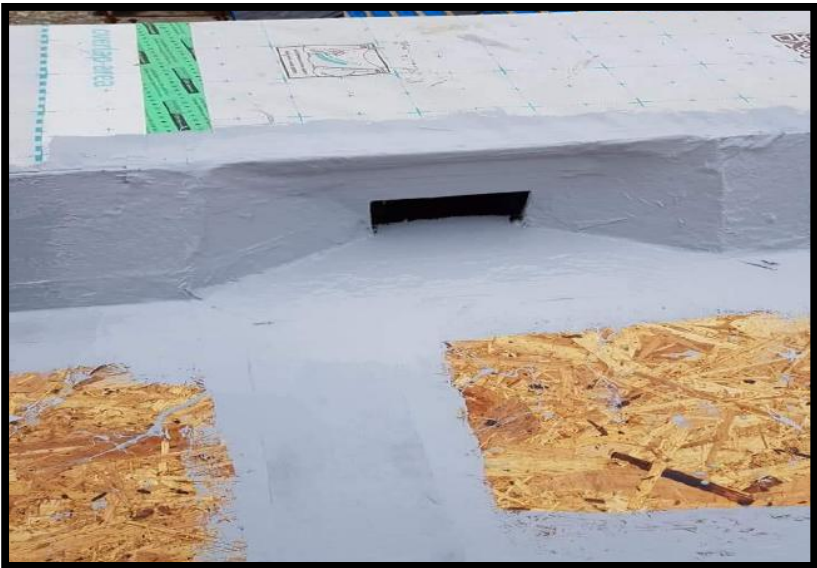
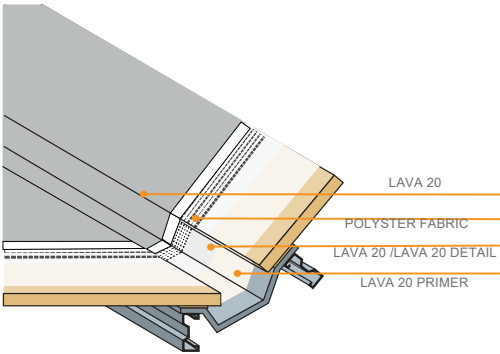
Abutment Detail



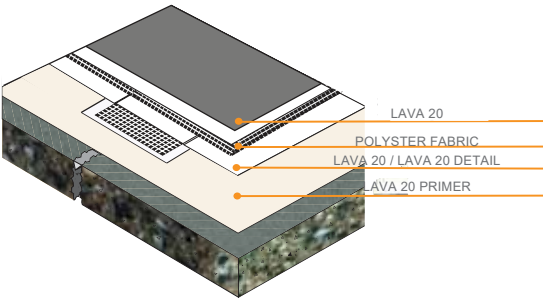
External Corner Abutment Detail



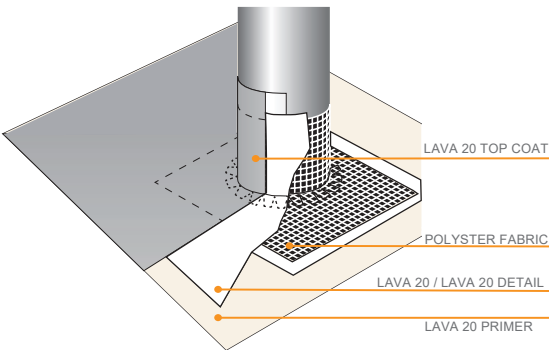
Gutter Detail



Crack Detail



Pipe Detail



LAVA 20 CLEAR TOP COAT



For perfect waterproofing as well as optimum optical result, the top-coat is applied over the main LAVA 20 waterproofing membrane, to give a decorative and colour-stable finish.

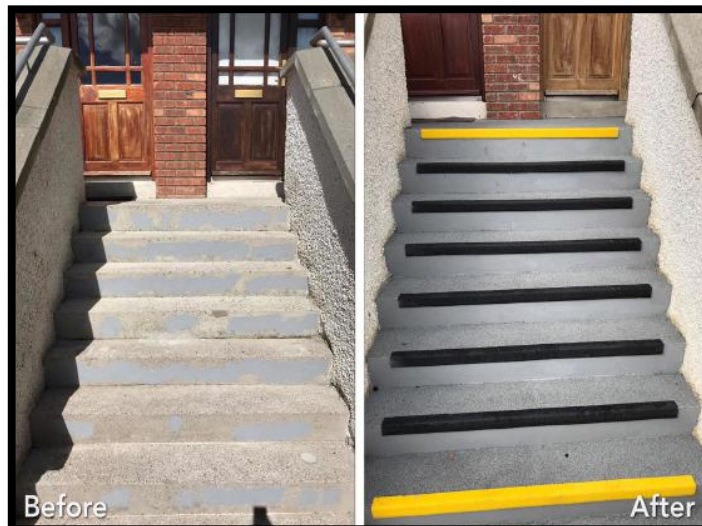
Few simple steps for Waterproofing & Top Coating / Anti Slip

Our LAVA 20 CLEAR TO COAT is transparent, one component, non-yellowing, deep-penetrating, UV stable sealer with excellent adhesion to almost all surfaces. Provides excellent chemical resistance especially to salt-water spray, ice melting salts and detergents. Also provides high pedestrian and low car traffic abrasion resistance.

1. Apply Lava Primer
2. Waterproof with Lava 20
3. Apply Clear / Dark Grey Top Coat

For Anti Slip

4. Sprinkle Quartz or Flake While Top Coat still Wet
5. Brush off Excess then seal With more top Coat



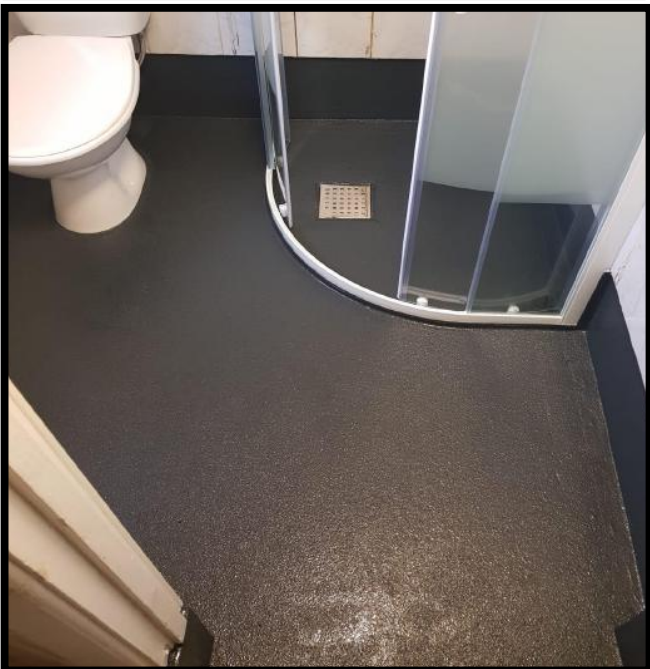
LAVA 20 DARK GREY TOP COAT

For perfect waterproofing as well as optimum optical result, the Dark Grey top-coat is applied over the main LAVA 20 waterproofing membrane, to give a decorative and colour-stable finish.

Our LAVA 20 DARK GREY TOP COAT is dark grey, one component, deep-penetrating, UV stable sealer with excellent adhesion to almost all surfaces.

Provides excellent chemical resistance especially to salt-water spray, ice melting salts and detergents.

Also provides high pedestrian and low car traffic abrasion resistance



LAVA 20 System



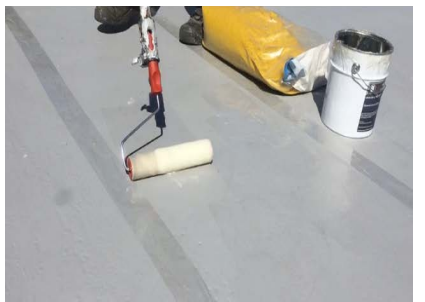
Surface Preparation

Make sure surface is clean and dry. (Step 1). All joints, cracks, imperfection are filled with Owl PU Mastic. (Step 2). Lightly prime the area using Lava Primer approx. 200g per m2 depending on the substrate



Waterproofing of Critical Areas

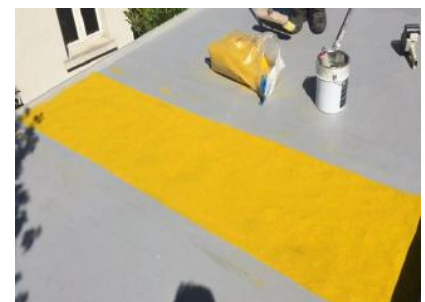
(Step 3). Reinforcing joints, cracks and other details - We have two options for reinforcing joints (a) fabric tape and (b) sticky butyl tape. Note: Geotextile is recommended on some surface but essential for bitumen, asphalt and felt.



Surface Waterproofing

(Step 4). Apply Lava 20 in **one*** or two coats over the entire area at a rate of 1.8 kg per m2 minimum up to 3 kg per m2, for new builds we recommend a rate of 3kg per m2 and for refurbishment. If existing surfaces we recommend 2kg per m2. For vertical surfaces you can add thickening agent up to 30 % to stop runs or sagging on vertical or sloped areas.

one coat* Just add Lava 20 CATALYST into the LAVA 20. It Also allow the overcoating of LAVA 20 within 4-6 hours even in low temperatures

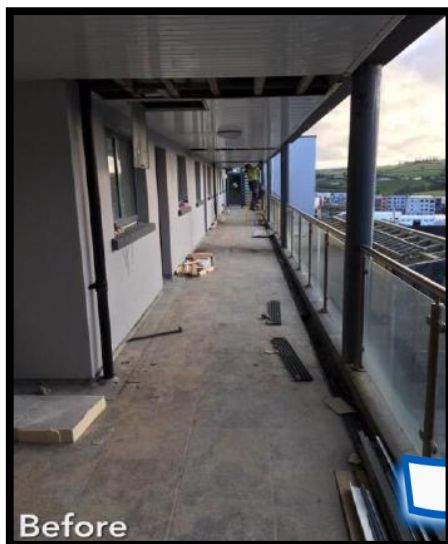


Top-coat application

(Step 5) For Top Coating / Anti Slip Finish apply Lava 20 Clear / Dark Grey Top Coat. Sprinkle Quartz or Flakes while still wet, brush off any excess the following day then seal with more Lava Clear Top Coat.

LAVA 20 + QUARTZ + CLEAR/DARK GREY

Below photo features a beautiful waterproofing job done on a newly built block of apartments which will take regular heavy foot traffic etc. The client needed something that would match the decor, be safe and anti slip resistant delivering a one stop waterproofing system that will keep the tenants safe and dry for years to come. Lava 20 was chosen as they could overlay on the existing substrate and also match the existing decor with natural quartz with Owl Lava 20 Clear Top Coat anti slip finish



Above balcony photo had leaks coming through existing tiles and concrete. The Solution : The Tiles were removed . T the area was leveled with cement joints and perimeter was reinforced and Lava 20 liquid rubber system was applied. Afterwards, an attractive anti slip finish was added by applying a layer of Lava 20 Clear Top Coat followed by Quartz and finally sealed with more Lava 20 Clear Top Coat.



Refurbs for Flat or low-pitched Roof

OWL Roof

Designed for all flat or low-sloped roofs

Our 100% silicone roof coating adheres to nearly any aged roof

Why choose OWL Roof?

Our high-solids, low odour, single-component, 100% silicone roof coating offers unparalleled waterproofing performance. It is extremely flexible, cures rapidly (2-6 hours), and resists oxidation, severe weather, ozone, UV rays, and many chemicals that can damage your roof.

OWL Roof, a rubber-like seamless coating extends the life of your roof and improves your roof's performance with its superior UV resistance, high tensile strength and extremely environmentally friendly formula.

100% Silicone Roof Coatings

Puts an end to leaks and future proofs your roof

Get all the benefits of replacing your roof for only half the cost with OWL seamless silicone roof coatings.

OWL Roof offers a full line of silicone roofing products that improve roof performance and extends the life of your flat roof.

- Formula based off professional-grade roof coatings
- Used in the commercial industry for over 20 years
- Easy installation: Clean, Prep, Coat
- 100% silicone, flexible, does not crack
- Unaffected by ponding water
- Waterproofs your roof
- Resists wash-off in rain
- Will not chalk, degrade, or haze from UV exposure
- Environmentally friendly
- No need for any more silver reflective paint
- Maintenance Free



- Garage & Extensions
- Mobile Home /Caravan
- Camper Van
- SPF
- Granulated cap sheet
- Asphalt
- Metal Gutters & valleys
- Concrete
- Smooth surface BUR
- PVC / TPO / EPDM



1 - Clean & Dry

1 - Make sure Surface is clean & Dry.

2 - Reinforce using Polyester Tape Or Butyl Tape.



2 - Taping & Reinforcing

3 - Then Coat Owl Roof using Brush or Roller. Approximately 1kg per m2



3 - Owl Roof Coating





Owl Flashing Grade

The Pro Patch

Available In White & Grey



Owl Flashing Grade / Pro Patch Silicone Sealant is designed to seal abnormal roof penetrations that cannot be covered with standard sprayers or rollers. Owl Pro Patch Silicone Sealant can be applied with a brush, trowel, or putty knife.

Because the product is so thick, it can stand in place of traditional rubber, mesh, and polyester fabrics or tapes. Rather than laying down a roll of tape over separated seams, this product can be brush-applied over seams and around flashings much more quickly. It will also be much stronger than a fabric-reinforced coating. It should be applied over the seam and then used in conjunction with our High Solids Silicone Roof Coatings.

On top of sealing seams, Flashing Grade / Pro Patch Silicone Sealant is great for sealing flashings, joints, small cracks, fasteners, vents, uneven surfaces, protrusions, drains, and depressions.





FAST APPLICATION

OWL range of products are fast to apply. Fast drying, durable, no risk related to sudden rain or low temperatures, no reinforcement mesh needed.



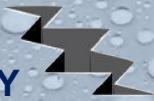
HIGH ELASTICITY

OWL waterproofing systems guarantee an extraordinary elasticity to resist movements and dilatations of the substrate.



CHEMICAL RESISTANCE

OWL products have an excellent resistance to acids and other chemicals making it an ideal choice for many applications.



CRACK BRIDGING ABILITY

OWL waterproofing products can fill cracks and remain flexible on top of all substrates in all temperatures.



THERMAL SHOCK RESISTANCE

OWL products are suitable in any weather condition, unlike other systems OWL can resist excessive thermal shocks



DURABLE

OWL waterproofing products are long lasting, durable systems that guarantee lasting quality you can count on.



FLEXIBLE

OWL products are very flexible and will expand and contract throughout the year with your surface



EASY

Apply simply by using a brush, roller, squeegee or sprayer, OWL products are easy to apply without any risk of making mistakes.



FAST

OWL products reduce tedious applications and cut labour costs and time dramatically whilst avoiding risk with sudden rain



UNITED KINGDOM OFFICE

Mabgate Business Centre,
93-99 Mabgate, Leeds LS9 7 DR
Tel: 0845 528 1480

IRELAND OFFICE

135 Slaney Road
Glasnevin, Dublin 11
Tel: (01) 830 2250

WWW.OWLWATERPROOFING.CO.UK