

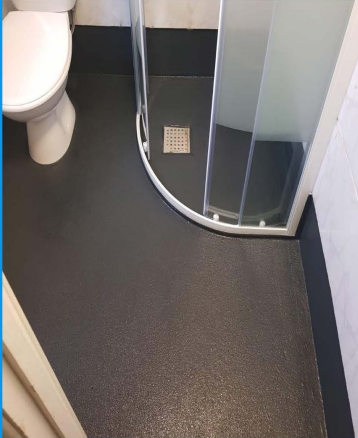
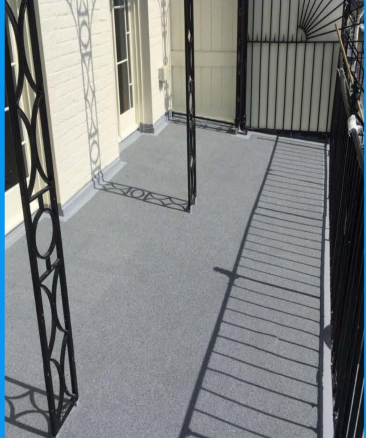
**System 1:**

# LAVA 20



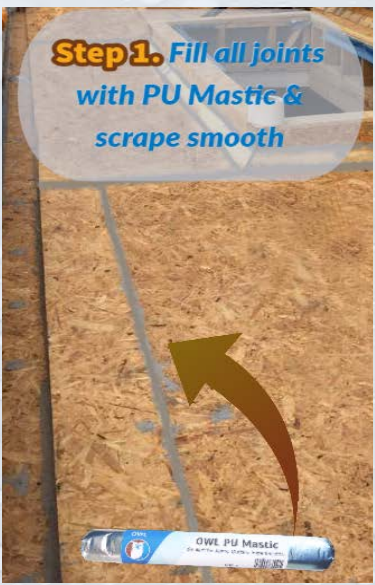
**DURABLE, VERSATILE & FLEXIBLE LIQUID RUBBER WATERPROOFING SYSTEM FOR...**

**FLAT ROOFS    BALCONIES    BATHROOMS**



- ✓ **More Cost Effective**
- ✓ **Flexible / High Elasticity**
- ✓ **Chemical Resistant**
- ✓ **Maintenance Free**
- ✓ **Fast & Easy To Apply**
- ✓ **UV Resistant**
- ✓ **25 Year Warranty**
- ✓ **Highly Durable**
- ✓ **Anti - Slip Option**

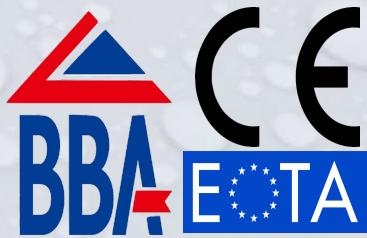
## Waterproof Almost Anything In 4 Easy Steps



### APPLY ON TO:

- ✓ **Timber (OSB / WPB Plywood)**
- ✓ **Concrete**
- ✓ **Metal**
- ✓ **Fiberglass**
- ✓ **Single Ply**
- ✓ **Asphalt\***
- ✓ **Felt\***

\*Requires Matting With Geo-Textile or Chopped Strand Matting



# OWL WATERPROOFING



Irl 01 830 22 50

**The Wise choice**

U.K. 0845 528 1480

[www.OwlWaterproofing.co.uk](http://www.OwlWaterproofing.co.uk) / [info@OwlWaterproofing.co.uk](mailto:info@OwlWaterproofing.co.uk)



# System 2: OWL ROOF



**High Quality SILICONE ROOF COATING / WATERPROOFING System For ALL TYPES of EXISTING ROOF SURFACES.**

**INDUSTRIAL FLAT ROOFS**



**RESIDENTIAL FLAT ROOFS**



**GUTTERS VALLEYS**



## USES & BENEFITS:

- ✓ **More Cost Effective**
- ✓ **Seamless**
- ✓ **Flexible**
- ✓ **Maintenance Free**
- ✓ **Fast & Easy To Apply**
- ✓ **Waterproofs**
- ✓ **25 Year Warranty**
- ✓ **50 Year Life Expectancy**
- ✓ **One Coat Application**

## **3 Easy Steps To Save Your Roof**

**Step 1.** Clean The Surface With a Powerwash or Brush



**Step 2.** Reinforce With Either Polyester Tape Or Sticky Butyl Tape



**Step 2.** Flashing Grade Can Also Be Used For Reinforcing Pipes, Fixings Etc..



**Step 3.** Coat With OWL ROOF Silicone



## APPLY ON TO:

- ✓ **Felt Roofs**
- ✓ **Asphalt Roofs**
- ✓ **Concrete Roofs**
- ✓ **Metals**
- ✓ **Asbestos**
- ✓ **PU Foam**
- ✓ **Fibreglass\***
- ✓ **Single Ply\***
- ✓ **Other Coatings\***

\*For Smooth Surfaces e.g. Fibreglass, PVC, Single Ply we recommend priming With Owl Universal Primer Or Lava Quick Prime



# OWL WATERPROOFING

**The Wise Choice**

Int 01 830 22 50

[www.OwlWaterproofing.co.uk](http://www.OwlWaterproofing.co.uk) / [info@OwlWaterproofing.co.uk](mailto:info@OwlWaterproofing.co.uk)

U.K. 0845 528 1480

